

## Friday Newsletter - 11/3/17

- **Saturday, 11/4/17 -- PTO Ski-Tuning Drop-off, 9am-11am at MHT:**
  - This is a great opportunity to raise funds for MHT! Please encourage friends and neighbors to drop their skis/snowboard off for a tuning!
- **Monday, 11/6/17 -- School Board Meeting, 6pm-8pm**
- **Wednesday, 11/8/17 -- Open House for Parents at Rye Junior High School, 6pm-7pm:**
  - Any parents interested in learning more about Rye are encouraged to attend. Please note, there are no dates out yet for Portsmouth Middle School's jump-up day and open house.
- **Wednesday, 11/8/17 -- Walking Field Trip to the New Castle Post Office for K-2 Students, 1pm-2pm.**
- **Thursday, 11/9/17 -- *Maison Navarre* Field Trip for 5/6 French Students, 11:30am-1pm.**
- **Friday, 11/10/17 -- No School for Students (Veteran's Day):**
  - Parents: this day is also set aside for parent-teacher conferences; if you haven't yet made an appointment, please contact your child's teacher(s) to schedule one!
- **Sunday, 11/12/17 -- Seacoast Half Marathon Sater-Stop at the Library, 7am-12pm:**
  - This event is facilitated by MHT 6th graders.
- **Saturday, 11/18/17 -- PTO Ski-Tuning Pick-up, 9am-11am.**
- **Wednesday, 11/22/17 -- Early Release Day, pick-up at Noon.**
- **Thanksgiving Recess, 11/23/17-11/26/17.**
- **Ongoing -- Halloween Candy Donations are being collected- The box is in Mr. Latchaw's Office.**
- **Ongoing -- Language Arts and Social Studies Enrichment:**
  - Mrs Lazenby has joined the upper school (grades 3-6) for the next month as part of Language Arts and Social Studies Enrichment. She is working with both groups to create playscripts connected to Folk Tales and Ancient Civilizations. Her residency will culminate with two whole school performances: one during the day for the students, and a **6pm evening performance for parents and community members on November 30th**. As part of this enrichment, students will also learn how to plan and write a script, in addition to acting and performing songs connected to their area of study.



**Re: School Health Screenings**

"

F gct "Retgpn\*+II wctf kcp\*+<"

"

Ky kn'dg'r tqxkf kpi 'j gcnj "uetggpkpi u'cv'O J V'qxtg'vj g'pgzv'hgy 'y ggm'hqt <xkukqp."j gctkpi .dqf { 'o cuu'lpf gz "DO K: "cpf "dmqf " r tguwtg0"

"

Cu'c'uej qqn'pwtug. "Kdgrkxg'vj cv'j gcnj "uetggpkpi u'ctg'cp'ko r qtcvpv'eqo r qpgpv'v'q'vj g'j gcnj "cpf 'y gm'dgkpi "qh'vj g'uwx'gpw" j gtg'cv'O J V0Xkukqp"qt"j gctkpi "kuwgu'eqwv' r qvgpv'cm' "j kpf gt" { qwt'ej krf au'ngctpkpi "cpf "cecf go le"gzr gtlgpeg0[ qwt'ej krf au' DO K'c'o gcuwtgo gpv'qqn'hqt"dqf { 'hcv.'cpf "dmqf "r tguwtg'tgcf kpi u.'o c { 'kpf kecvg'cp'kpetgcugf 'tkun'hqt'f kcdgvgu."j ki j "dmqf " r tguwtg."qt"qj gt' b gf kecn'eqpegtpu0Uetggpkpi 'j gir u'kf gpv'h' 'k'hwtvj gt'gxcn'wckqp'ku'tgs wktgf "d { 'c' b gf kecn'r tqxkf gt"qt" ur gekrkuv'0"

"

Qpeg'vj g'uetggpkpi u'ctg'eqo r rvgvf. "{ qwt'ej krf 'y kn'dg'ugpv'j qo g'y kj 'y g'tguwnu'cpf 'y j gvj gt'c'r tqxkf gt'tghgttcnleqpwnckqp" ku'tgeqo o gpf gf 0K{ qw'do not'y cpv' { qwt'ej krf 'uetggpgf. 'r ngcug'ugpf 'kp'c'rgwt'vq'uej qqn'd { **Monday, November 6, 2017.**" uvc'kpi 'vj cv' { qw'f q'pqv'y kuj 'uetggpkpi 'vq'dg'f qpg0K{ qw'j cxg'cp { 's wgu'kpu'qt'eqpegtpu."r ngcug'ecm'o g'cv'vj g'uej qqn'cv' \*825+ 658/7638" dgy ggp'vj g'j qwu'qh'; c/3r 'O qpf c{/Hkf c { 0"

"

Tgur gev'wmf. "

"

Nk' c'J gus wktctquc. "TP "

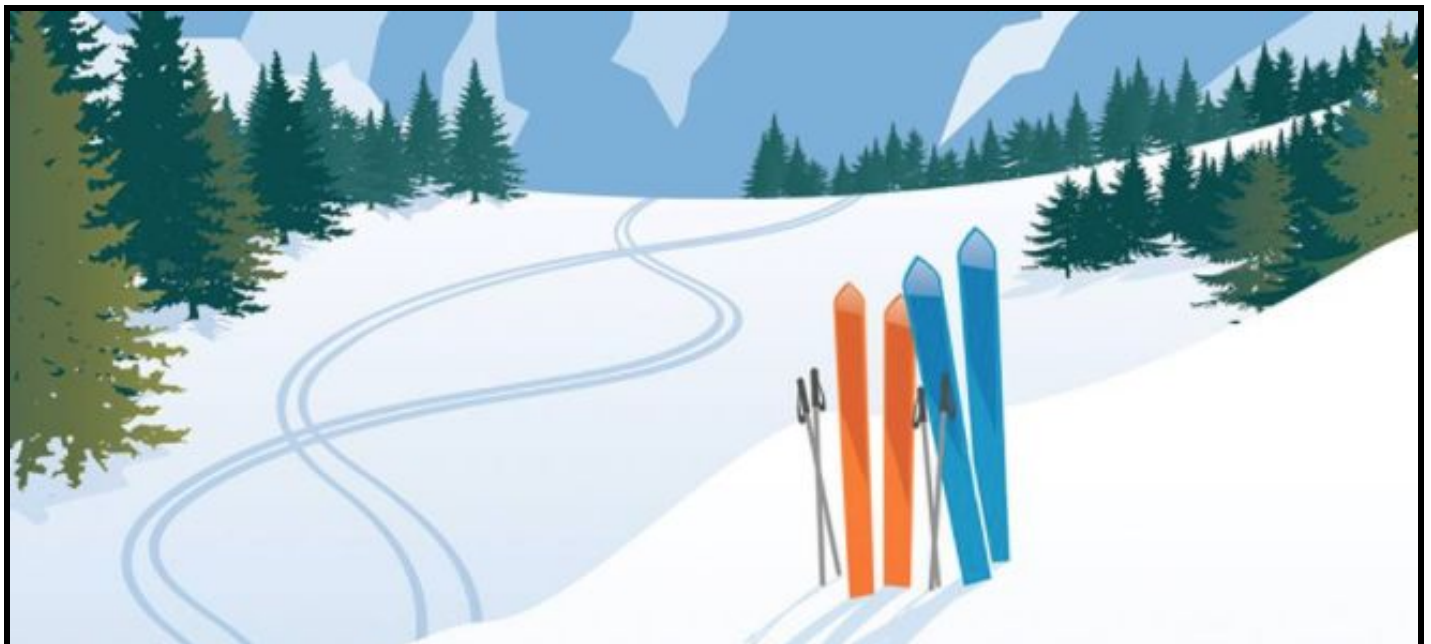
O J V'Uej qqn'P wtug"

"



"





# SKI & SNOWBOARD TUNING EVENT

Tune up your skis/snowboards **AND** support the  
Maude Trefethen School PTO.

Better yet, you'll receive BOTH a \$10 gift certificate  
and 25% coupon to Golf and Ski in Greenland.

**SATURDAY, NOV 4TH, 9 - 11 AM**

Maude Trefethen School, Cranfield St, New Castle

